

At a glance ...

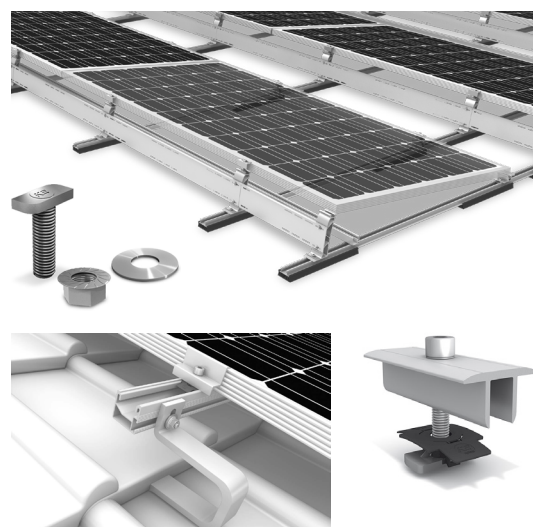
K2 Systems



Product advantages

K2 Systems, a manufacturer of mounting systems for solar technology, has developed innovative system solutions for the international photovoltaic industry since 2004. The product range of the medium-sized company (with headquarters in Renningen in Baden-Württemberg) includes innovative mounting solutions for sloped roofs, for flat roofs, for the ground mounted as well as custom-made solutions. Those are designed in the company's development department, produced, adapted and optimized to the ever changing market. K2 Systems stands for secure connections, high quality and precisely manufactured as well as exactly fitting components.

Motivation and team spirit shape the international workforce who provides its best work in European subsidiaries, South Africa, Brazil, the USA and Mexico. On a daily basis. Many years of experience and the attention to service make K2 Systems a popular partner in the field of solar mounting systems.



Security and reliability

- Quality certification ISO 9001:2015 (TÜV-Rheinland)
- German jurisdiction: Stuttgart
- Product development according to EUROCODES, the European standard of structural design

Quality and durability

- Internal quality assurance standards and extensive testing ensure high build quality
- Quality standards "Made in Germany" or "Made in Europe"
- High-quality components made of aluminium and stainless steel guarantee durability and high resistance to corrosion
- 12 year manufacturer's warranty
- Extensive technical certificates and approvals for all available systems

Service and ease of installation

- Comprehensive design software K2 Base allows a quick dimensioning and individual calculations for each project as well as a data transfer into the planning tools of inverter manufacturers
- Modular design: the same individual components for all mounting systems
- Pre-assembled kits reduce costs of installation

Variety and innovation

- Wide product range, i. e. sloped roof, flat roof, and ground mounted systems as well as solutions for special projects
- Development of new products and their refinement by in-house R&D department
- Innovative insertion system with captivating optics without module clamps and efficient installation due to low use of tools